

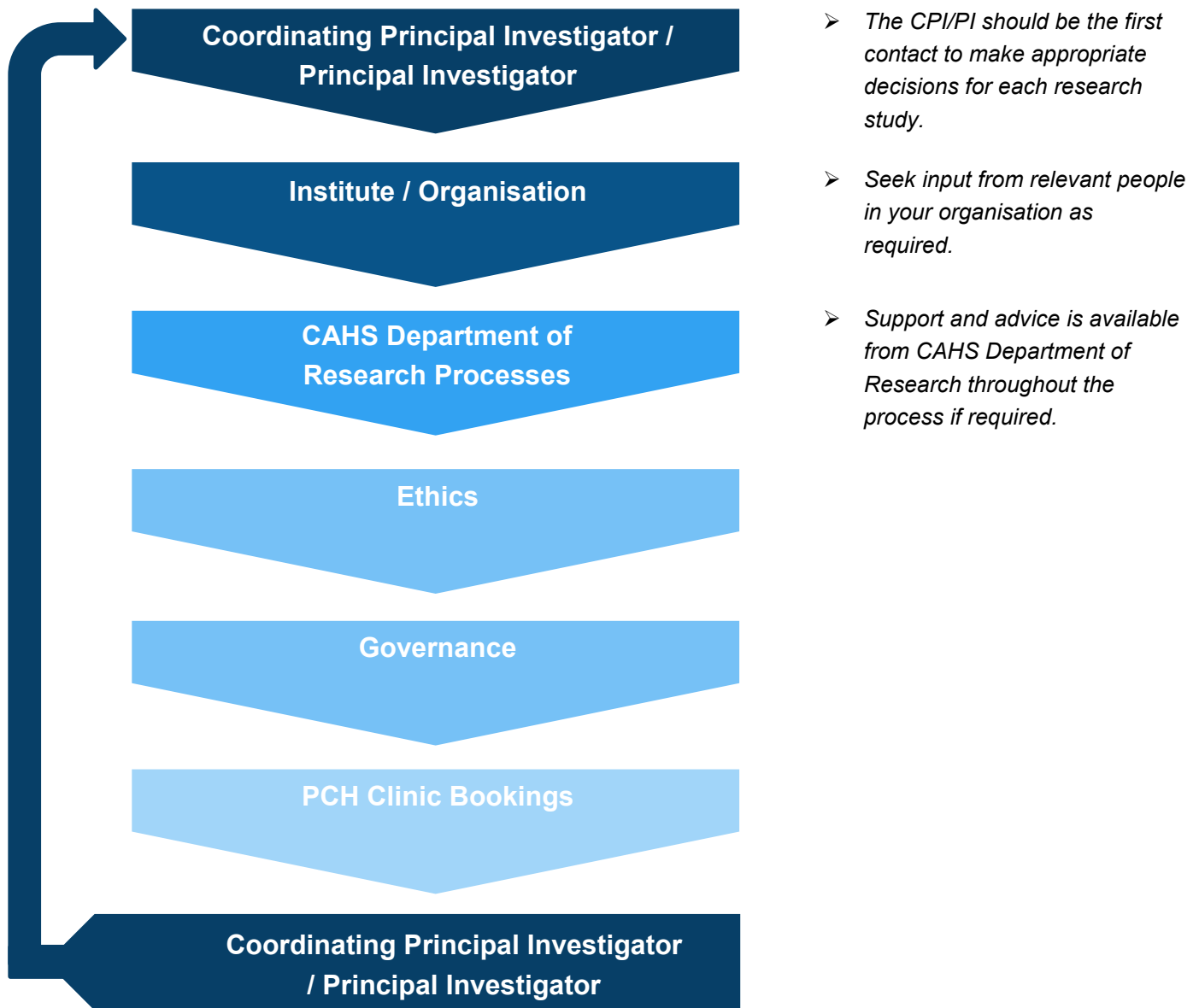


Research reactivation / commencement process during COVID-19 pandemic

For studies conducted at CAHS

- ↓ Moving through each stage should only occur once relevant approvals have been received for prior stage.
- 📄 Please refer to (and regularly check) supporting documentation for further information and latest guidelines. cahs.health.wa.gov.au/Research/COVID19-and-research-processes
- ✉ Contact the CAHS Department of Research if required after checking the process and associated resources. CAHS.ResearchSupport@health.wa.gov.au CAHS.ethics@health.wa.gov.au CAHS.RGO@health.wa.gov.au

Research approval workflow. See detailed pathways over page.



Healthy kids, healthy communities

Compassion

Excellence

Collaboration

Accountability

Equity

Respect

Pathways to research approval and associated workflows.

